

The TC LHIN Community Health Centre Journey

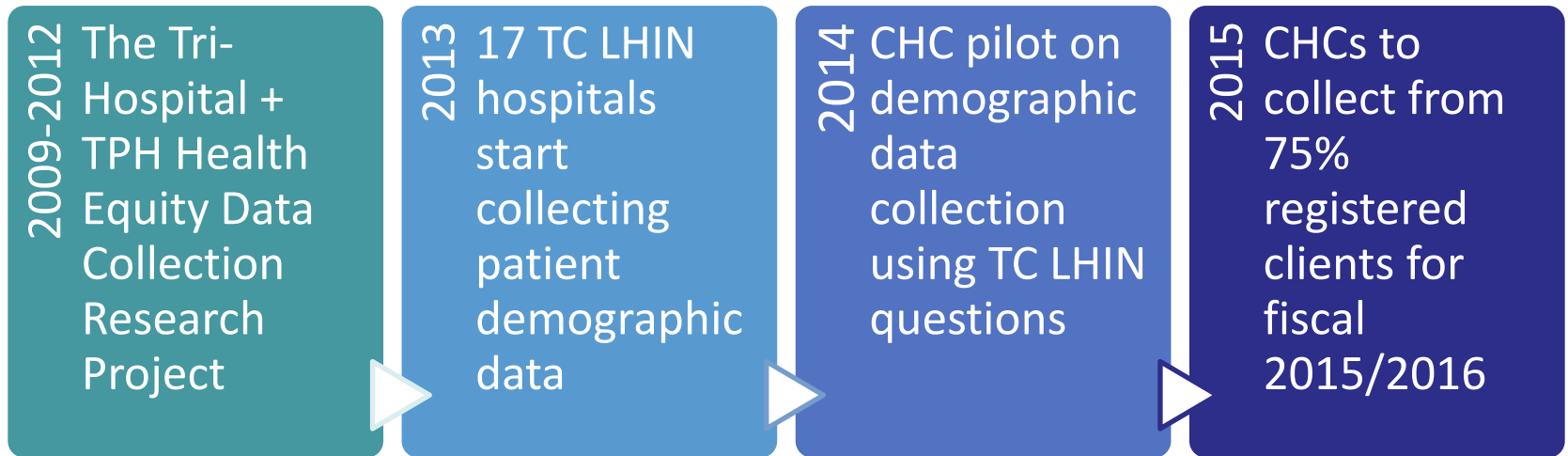
Measuring Health Equity in the TC LHIN CHCs:
Fall 2015 Workshop
17 November 2015

MOUNT SINAI HOSPITAL
Joseph and Wolf Lebovic Health Complex
Bright Minds. Big Hearts. The Best Medicine.



Measuring Health Equity in the TC LHIN

As part of its initiatives around Health Equity, the Toronto Central LHIN has mandated that all **TC LHIN Hospitals and Community Health Centres** collect demographic data using standardized questions.

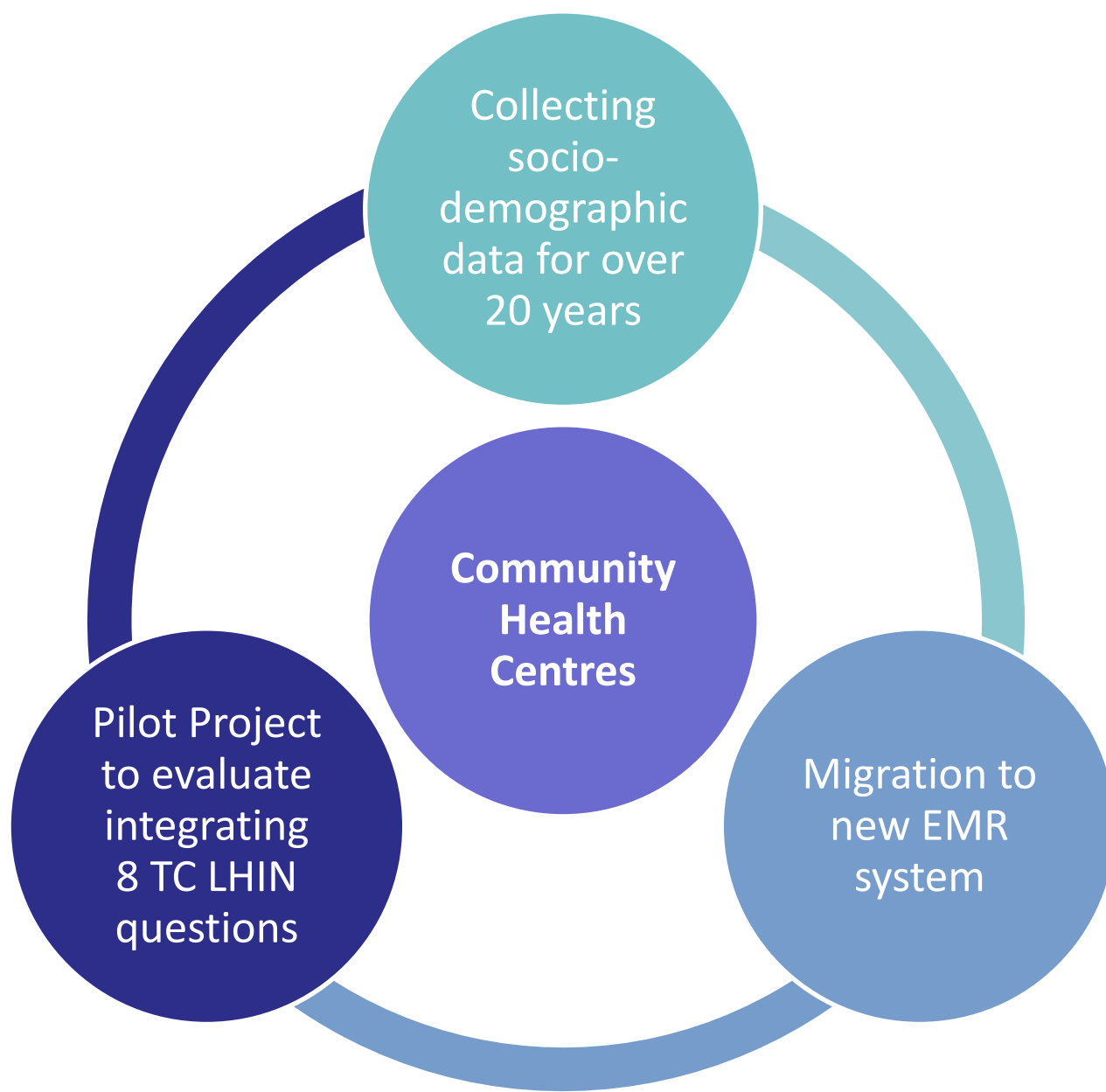


CHC Pilot Project

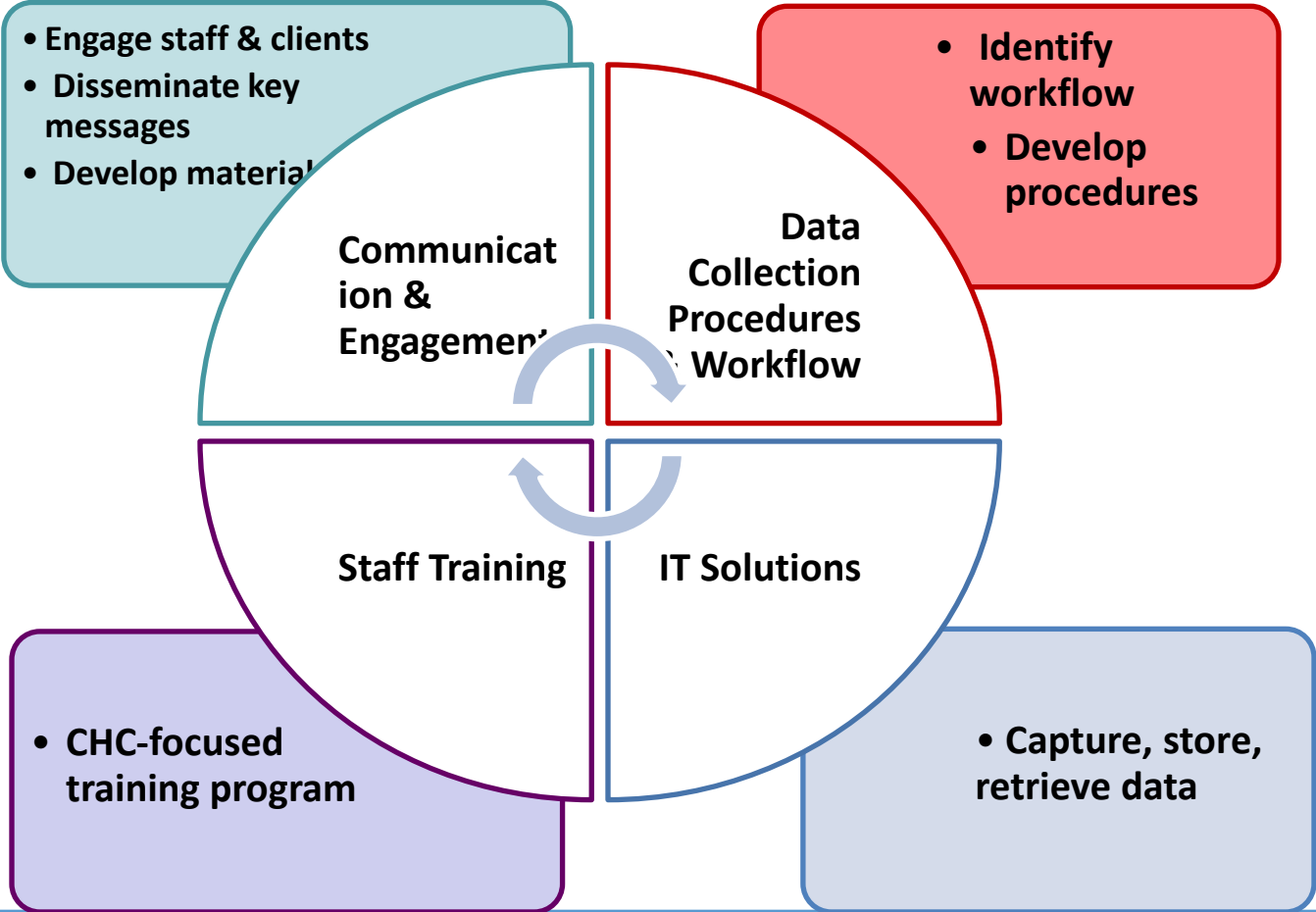


AOHC Health Equity Charter

- Developing evaluation strategies that measure health equity efforts and health equity results, and using the evaluation data to continually improve health equity practices.
- Documenting the causes of, impacts of and potential solutions to health inequities
- Contributing to building an integrated, high-performing health system with health equity as one of its underlying principles.



Pilot Process and Evaluation Framework



Development of Resources



Resources adapted for CHCs

The following materials were developed during the pilot for the CHC sector:

Adapted
demographic
questions

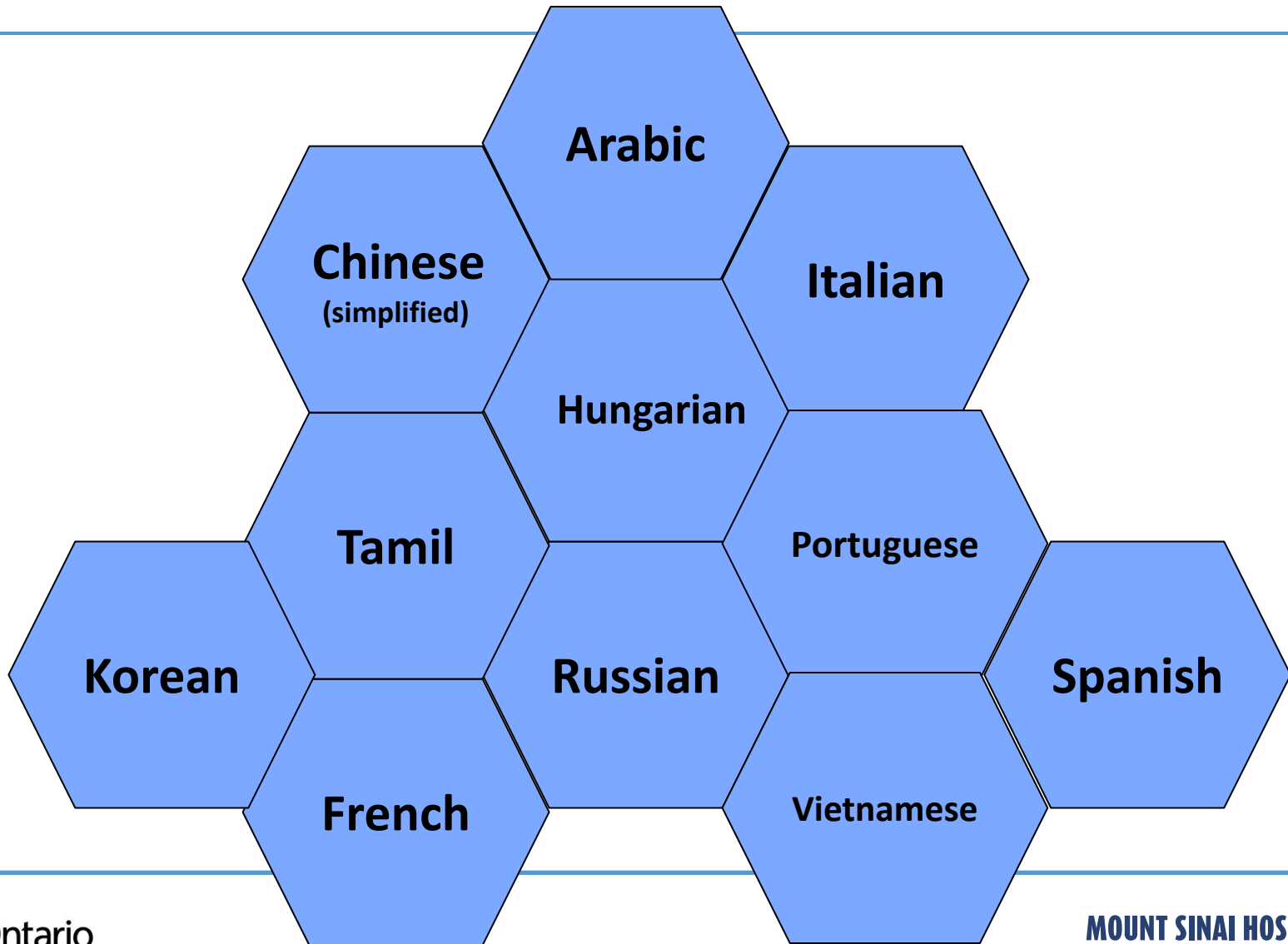
NOD Guidelines
and Data Entry
Notes

CHC training
videos

Adapted
training to CHC
milieu

Project workplan

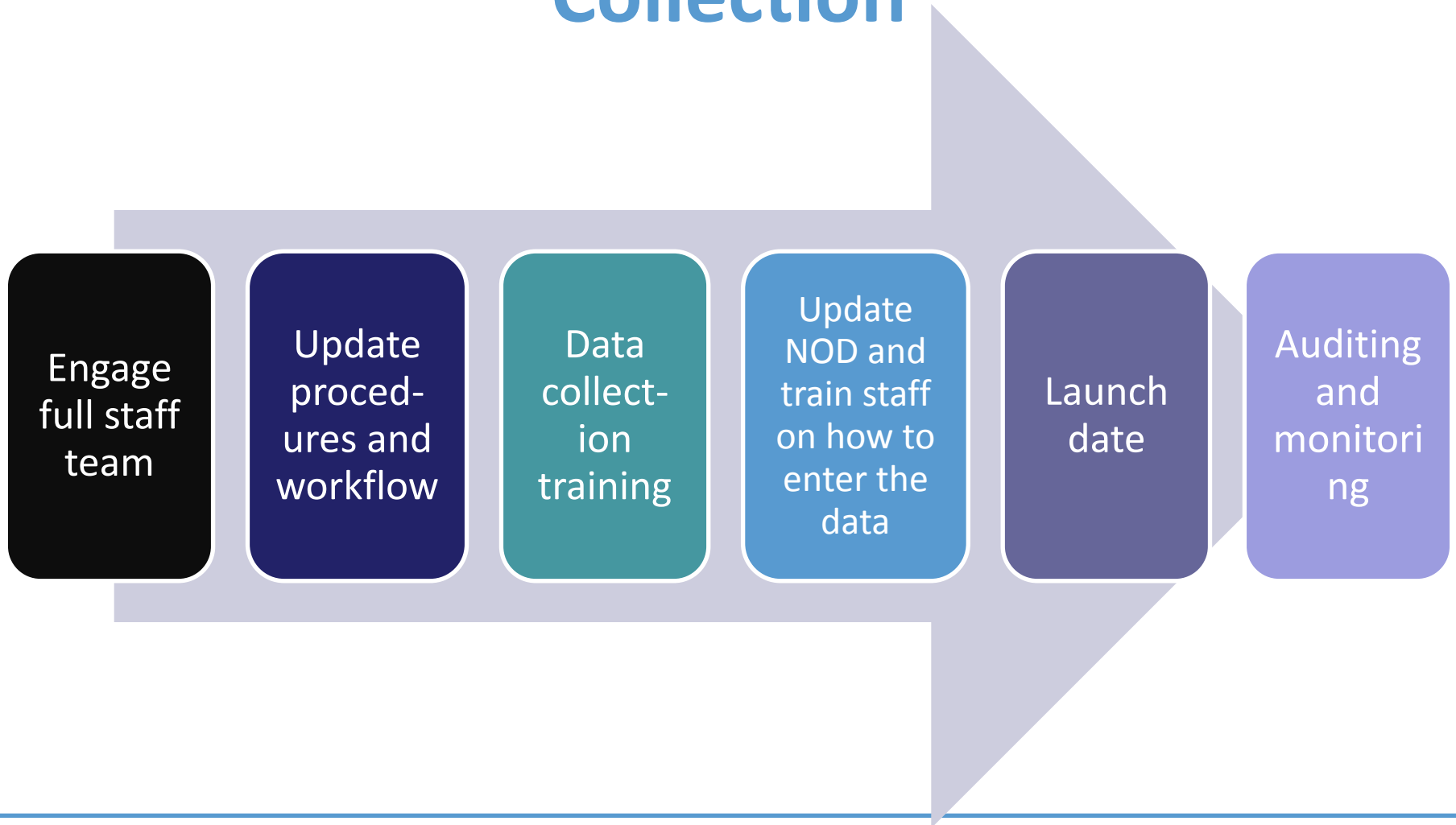
Translation of TC LHIN Questions & Brochures



CHC Rollout



Recommended Steps to Data Collection



Current Status of TC LHIN CHCs

8 CHCs

Collecting from
all registered
clients

6 CHCs

Collecting from
new clients +

3 CHCs

At beginning of
rollout plan

Fall Check-in – Emerging Themes

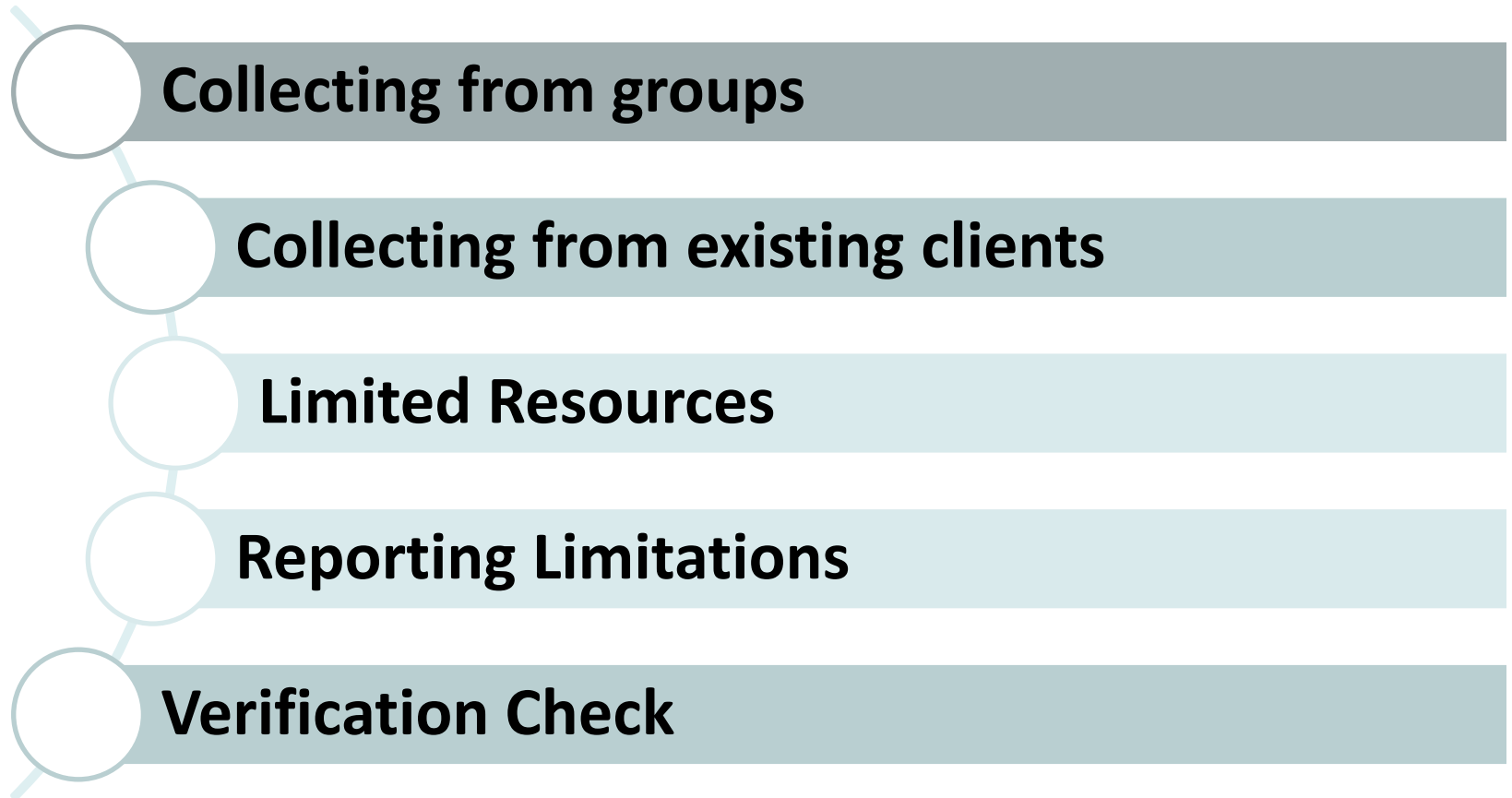
Range in expansion plans

Data Quality Issues

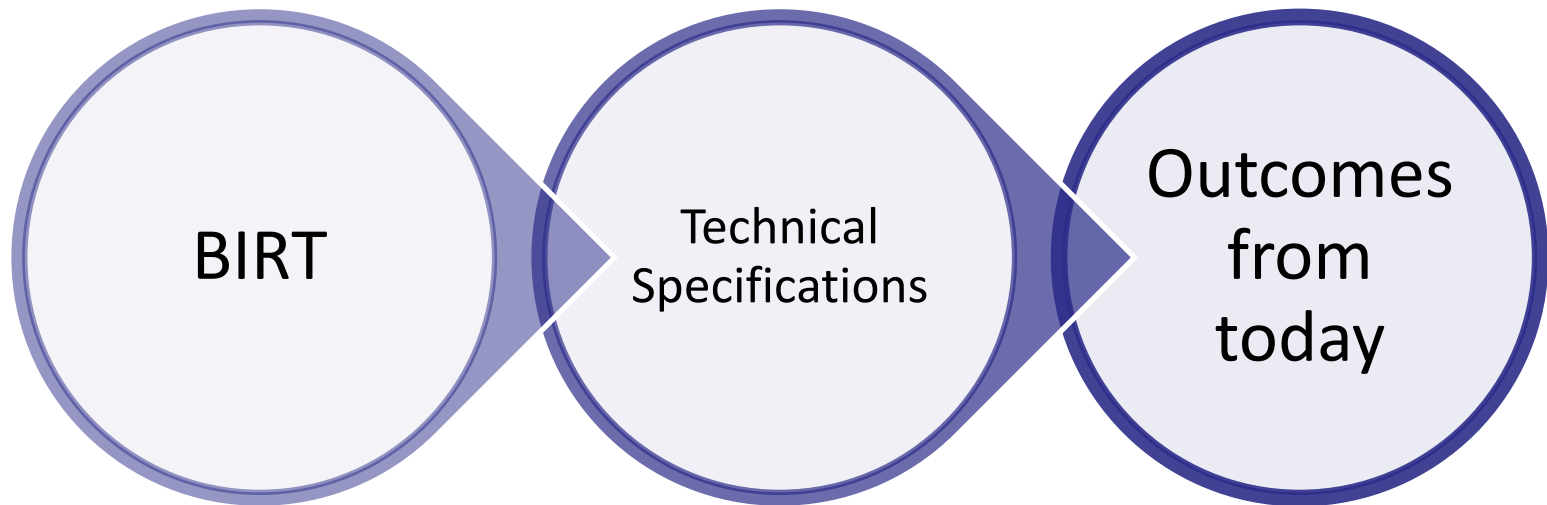
Workflow Review

**Opportunities to learn from
each other**

Fall Check-in – Current Challenges



What's next



**“We will be bold ,
strategic and
relentless...”**